

Laboratory Project 3: Spirogravitator

K. Durney and N. E. Cotter
Electrical and Computer Engineering Department
University of Utah
Salt Lake City, UT 84112

Abstract-You will build a secret weapon (secret because no one has figured out how to use it as a weapon) based on an RLC circuit and an op-amp. A more practical use for the circuit would be to power down a two-phase motor. Using Laplace transform techniques, you will design the circuit so it produces decaying sinusoids 90° out of phase.

I. PREPARATION

For Lab 3, which will last about three weeks, you will need the parts listed in Table I. You may purchase these parts from the stockroom next to the lab or purchase them elsewhere.

TABLE I
PARTS LIST FOR LAB 3

Item	Qty	Description
1	1	LF 353 op-amp
2	1	100 mH inductor
3	2	Capacitor (values determined by calculations)
4	3	Resistor (values determined by calculations)

II. LEARNING OBJECTIVES

- 1) Learn how to solve RLC circuits using Laplace transforms.
- 2) Learn how to extract function parameters from a waveform.

III. INTRODUCTION

This is Captain Quirk of the Starship Surprise. We are surrounded by Klingulon ships in quadrant 19, sector 80 (the 2nd floor of MEB). The Klingulons are closing and preparing to attack. We (TA's) are outnumbered 35 to 1 and have no operational photon torpedoes or phasor banks (or dry markers). The situation is critical. We have no choice but to use the Federation's new weapon, the spirogravitator, untried as it may be. Mr. Shock (so-called for his lab technique) informs me the new weapon may only be used in spiral form; at this time it is impossible to use it as a normal straight-line weapon due to the untold possibilities and problems that may exist. Mr. Shock has already plotted the locations of Klingulon vessels, but it is impossible for him to plot the spiral path of the weapon. All Vulcan-o's like Mr. Shock have a mind block against spirals and erupt if a spiral is visible in the immediate surroundings. However, it is imperative that the spiral be plotted on the scope before the spirogravitator is used, to be sure that none of the nearby planets (or students) are in the weapon's path. We are now screening the crew members (and students) to find someone with the spiral-plotting ability. Each candidate will be required to solve a Laplace transform problem, build a spirogravitator circuit, and plot the output on the scope. Space cadets are preparing for this exercise now.

The circuit diagram of the spirogravitator is shown in Fig. 1. v_i is a rectangular wave. The voltage v_0 is connected to the horizontal input of an oscilloscope and v_1 is connected to the vertical input of the same oscilloscope. The design problem is to select circuit components so that v_0 and v_1 will have equal amplitudes, and will be under-damped with the same frequency of oscillation and the same damping rate, but 90° out of phase. With these conditions, the resulting pattern on the oscilloscope will be the desired double spiral.

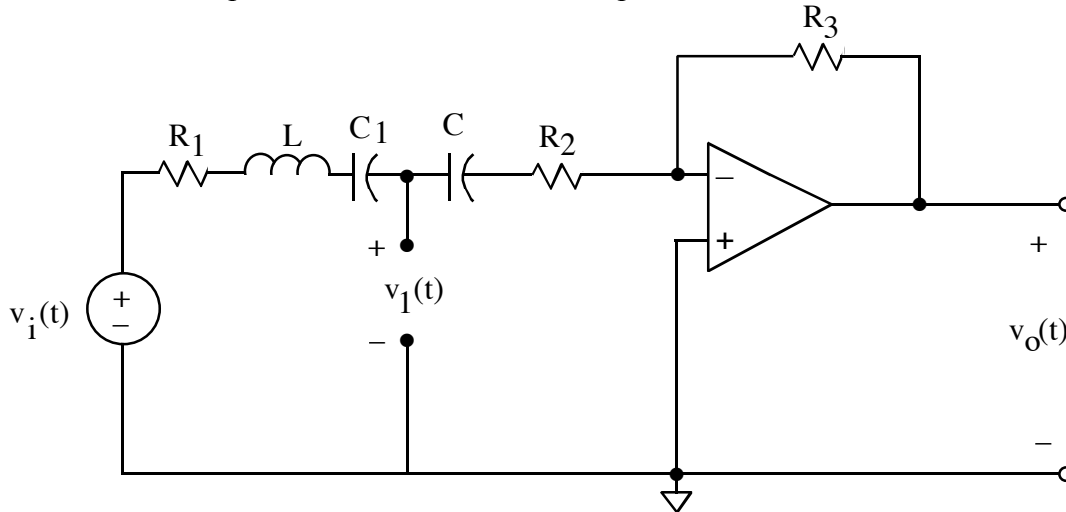


Figure 1. Diagram of the spiral graph circuit. v_i is a rectangular wave with zero dc level.

IV. MODEL OF INDUCTOR

For the inductance in the circuit of Fig. 1, use a 100 mH inductor you have purchased. Measure both the inductance and dc resistance of the inductor you use. Do this during the first lab period, as you will need these values for the calculations that you will be making. If you make R_1 and R_2 large compared to R_0 , the resistance of the inductor, you may be able to neglect R_0 . Otherwise, you should combine R_0 with R_1 . You will probably find that the shunt capacitance of the inductor and the shunt capacitance of the inputs to the oscilloscope are both negligible here, but that is not always the case.

V. ANALYSIS AND DESIGN OF CIRCUIT

A. Equations

Transform the circuit of Fig. 1 to the s domain and write expressions for $V_1(s)$ and $V_0(s)$, first for a half-period interval when $v_i(t)$ is positive, and then for a half-period when $v_i(t)$ is negative. Include initial conditions for the capacitance and inductance. Make consistency checks to ensure that your expressions are accurate. Take the inverse transform of $V_1(s)$ and $V_0(s)$. One of them will be of the form

$$a e^{-\alpha t} \sin(\beta t) \quad (1)$$

and the other will be of the form

$$b e^{-\alpha t} \cos(\beta t + \psi) + c \quad (1)$$

or

$$b e^{-\alpha t} [\cos(\beta t) \cos(\psi) - \sin(\beta t) \sin(\psi)] + c \quad (1)$$

B. Circuit Parameters

Choose circuit parameters so that the following criteria are satisfied:

- 1) $a = b$
- 2) $\psi = 0$ to make second waveform $be^{-\alpha t} \cos(\beta t) + c$
- 3) $\frac{1}{\alpha} = 3T$ where $\beta = 2\pi/T$ and T is the period of oscillation.
- 4) $\alpha = 100/\text{s}$

The first requirement makes $v_1(t)$ and $v_0(t)$ damped sinusoids that differ in phase by 90° . The second requirement makes the amplitudes equal. The third requirement makes the waves damp out at a relative rate that gives a nice spiral, and the fourth requirement makes the damping somewhat faster than the 10 Hz rate of the square wave driving the circuit.

Be sure that the total series resistance is large enough that the generator is not loaded excessively (the current is not too high) because excessive loading will distort the generator waveform.

C. Double Spiral

Use Matlab® to plot the spirals that you expect on the oscilloscope by letting $x = v_0(t)$ and $y = v_1(t)$ and plotting y versus x . Do this for at least one full period of oscillation both when $v_1(t)$ is positive and when it is negative. Be sure you understand fully how the spirals are produced on the screen when $v_0(t)$ and $v_1(t)$ are connected to the horizontal and vertical inputs, respectively. Also, write your Matlab® code so that you can easily change the period of $v_1(t)$ when you superimpose measured data later on.

VI. CONSTRUCTION AND TESTING OF SPIROGRAVITATOR CIRCUIT

A. Circuit Construction

Construct a breadboard version of the circuit in Fig. 1 using the component values that you have selected.

B. Display $v_0(t)$ and $v_1(t)$

Display v_1 and v_0 simultaneously on a dual-trace oscilloscope and verify that v_1 is a good square wave and that the period of v_1 is enough longer than the decay time of v_0 that the natural response of v_0 is negligible after half a period of v_1 .

Display v_0 and v_1 simultaneously on a dual-trace oscilloscope and check to see that they are consistent with your calculations, but wait to make detailed measurements until you get the spiral graph to work. Be sure that v_0 and v_1 are 90° out of phase, and their amplitudes are equal. (If they are out of phase, the plot will be tilted, and if their amplitudes are unequal the plot will be ellipsoidal.)

C. Display the Spirals

Connect v_0 and v_1 appropriately to the x-y inputs of an oscilloscope, (i.e., the two channels of input to the scope, with the scope set to display in x-y mode). Adjust the amplitude of v_1 to 1V zero-to-peak, and set the generator frequency to 10 Hz. You should see the double spiral pattern on the oscilloscope.

D. Measure $v_0(t)$ and $v_1(t)$

Display v_0 and v_1 again with the dual trace, and save the waveforms for use in Matlab® later on. Then measure α , β , a , b , c , and ψ to compare with your calculations. Think carefully about how best to do this. Also, measure the actual values of your components and use the measured values in your calculations to get the best correspondence with measurements.

E. Comparison of $v_0(t)$ and $v_1(t)$

Compare the calculated and measured values of $v_0(t)$ and $v_1(t)$ by plotting measured and calculated values of $v_0(t)$ on the same set of axes and by plotting the measured and calculated values of $v_1(t)$ on the same set of axes.

VII. NOTEBOOK AND REPORT

Turn in a copy of your laboratory notebook pages and a separate formal report. Refer to the grading information on the course website for the section numbering to use while writing the formal report. Use the IEEE format for typesetting. Information about the IEEE format, including a template file, is available on the course website. Additional information about writing the report and keeping a notebook is listed in the *Course Procedure* on the course website. Note that Matlab® plots, if they are listed in the contents of the report, must appear both in the laboratory notebook *and* the formal report.