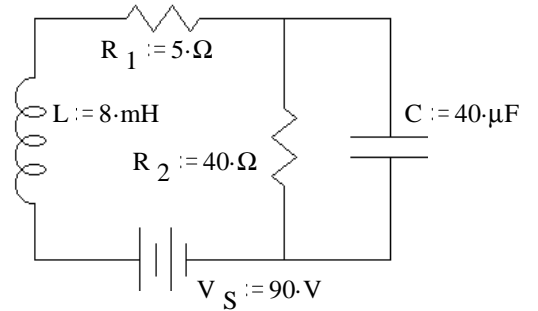


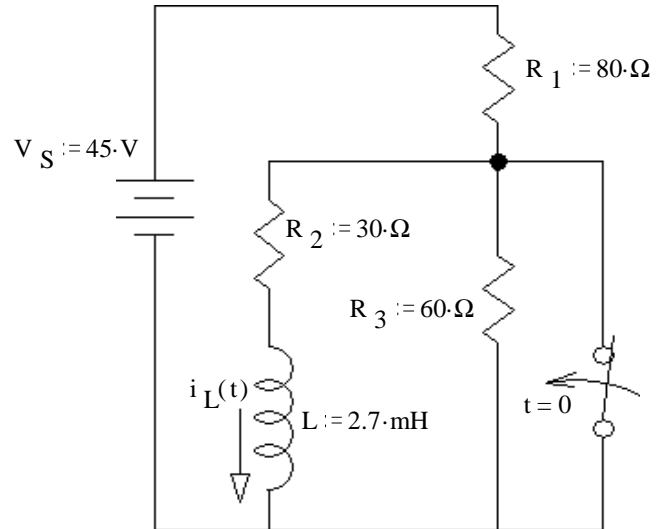
ECE 2210/00 Exam 2 given: Fall 14

(The space between problems has been removed.)

1. (9 pts) The following circuit has been connected as shown for a long time. Find the energy stored in the capacitor and the inductor (2 answers). Also show the values of the voltage(s) and current(s) necessary to answer this question.

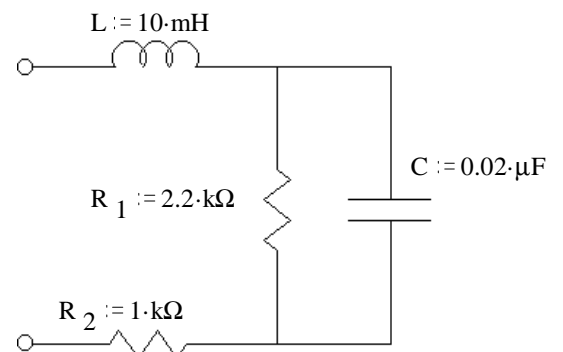


2. (32 pts) The switch has been open for a long time and is closed (as shown) at time $t = 0$.
a) Find the complete expression for $i_L(t)$.



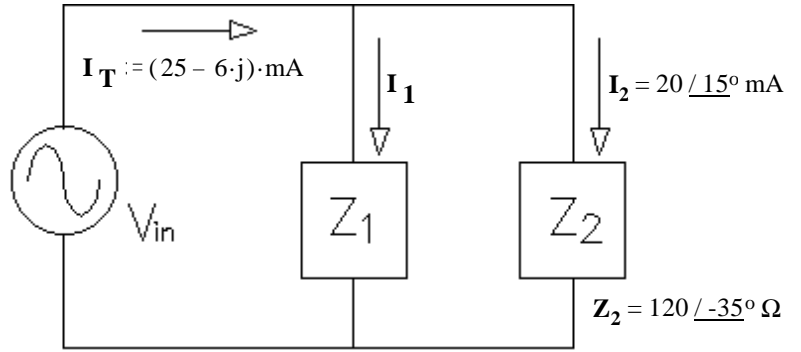
- b) Find i_L at time $t = 1.2\tau$. $i_L(1.2\tau) = ?$
c) At time $t = 1.2\tau$ the switch is opened again. Find the complete expression for $i_L(t')$, where t' starts at $t = 1.2\tau$. Be sure to clearly show the time constant.

3. (18 pts) Find Z_{en} in simple polar form (give me numbers). For partial credit, you must show work and/or intermediate results.
 $f := 5\text{-kHz}$



ECE 2210/00 Exam 2 Fall 14 p2

4. (23 pts) a) Find Z_1 . For partial credit you must show work and/or intermediate results.



b) To make Z_1 in the simplest way, what part(s) would you need? Just circle the needed part(s), don't find the values.
 resistor capacitor inductor power supply current source
 Thevenin resistor Ideal transformer voltmeter ammeter scope

c) Circle 1: i) I_2 leads the source voltage (V_{in}) ii) I_2 lags the source voltage (V_{in})

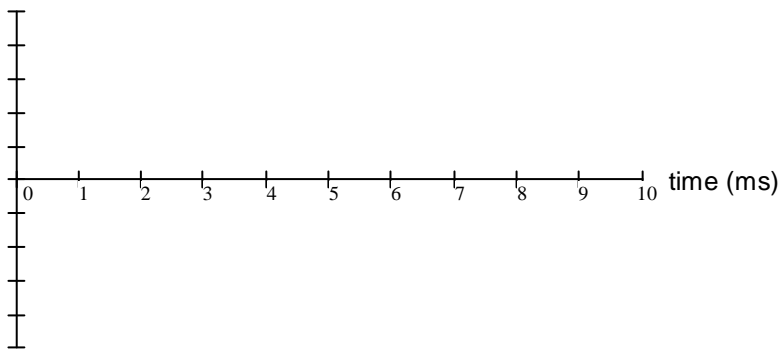
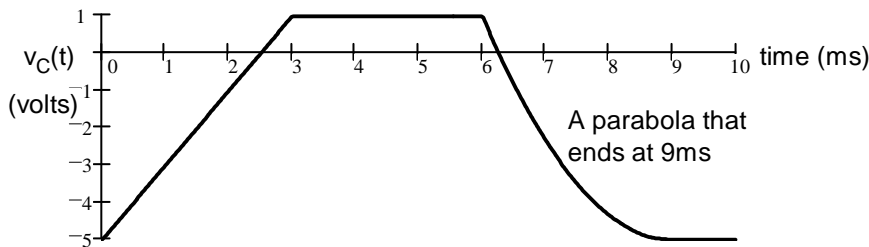
5. (18 pts) The voltage across a $4 \mu\text{F}$ capacitor is shown below. Make an accurate drawing of the capacitor current. Make reasonable assumptions where necessary. Label your graph.

Note: You will be graded on the accuracy of your plot at 0, 3, 6, 9 and 10ms, so calculate those values and plot or label them carefully. Between those points your plot must simply be the correct shape.

You **MUST SHOW** how you calculate your values starting from the original relationships between voltage and current.

That is: **Start with the interger and/or differential equations for the capacitor!**

$C := 4 \cdot \mu\text{F}$



Answers

1. 128 mJ 16 mJ 2. a) $300 \cdot \text{mA} \cdot e^{-\frac{t}{90 \cdot \mu\text{s}}}$ b) 90.4 mA

c) $300 \cdot \text{mA} - 209.6 \cdot \text{mA} \cdot e^{-\frac{t}{42 \cdot \mu\text{s}}}$

3. $1902 \Omega / -22.6^\circ$

4. a) $191.4 / 43.05^\circ \Omega$ b) resistor inductor c) i)

