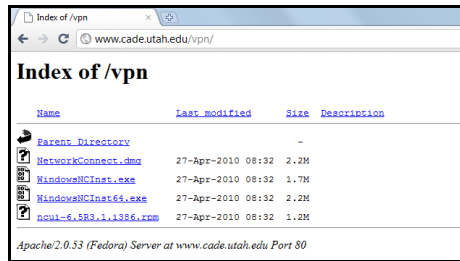


STEPS TO GET CST RUNNING WITH REMOTE LICENCE

Step 1:

Go to www.cade.utah.edu/vpn the page should look like the image below.



Here you select the program execution file for your system. For a 32 bit system download file [WindowsNCInst.exe](#). For a 64 bit download file [WindowsNCInst64.exe](#). This is a VPN program so you can remote into the Cade Lab.

Step 2:

Install the program after it is done downloading. The program is named Network Connect. It will be found in the Juniper Networks file. The icon is a Lock over a T-junction, like below

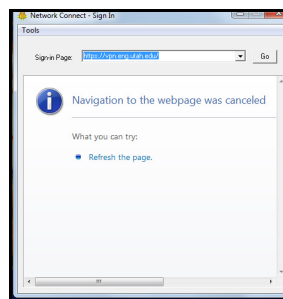


Step 3:

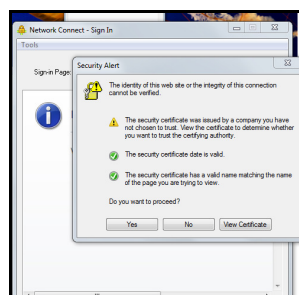
Open the program and put this in the box labeled Sign-in Page.

vpn.eng.utah.edu

Here it should look similar to the image below, after you have entered the information in the box click Go.



After you do that a screen will pop up, it should look like the image below, click yes.



Step 4:

You will get a window like below, use your windows login and password (Engman Lab).



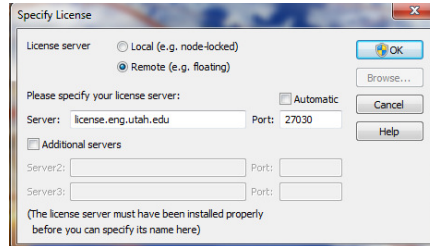
Step 5:

When you go to start CST you will have to enter the Server and Port number. To be able to change the port field you will have to uncheck the automatic box.

Server: **license.eng.utah.edu**

Port: **27030**

This should look like the image below.



Click ok and CST should start running.

You will need to log into Network Connect every time you want to run CST.

If you have a Mac 64 bit machine I hear it can be tricky getting this all set up. I have not done this so I can't comment on how to make it less tricky.